

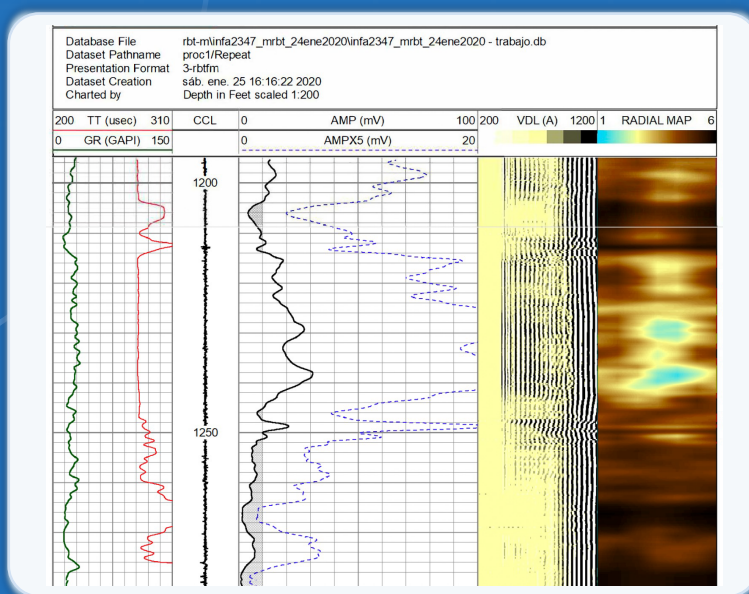


Radial Bond Tool (UHSRH)

The Ultra High Speed Hybrid Radial (UHSRH) tool evaluates the cement bond quality and integrity to both pipe and formation by providing the measurements of the cement bond amplitude (CBL) through a near receiver (3-ft crystal), and variable density log (VDL) through a far receiver (5-ft Crystal). UHSRH tool also provides a cement map through six (eight) (twelve) segmented receivers, each segment covers a 60° (45°) (60°) section of the pipe. All sonic data is captured and stored at 1 μ s sample rate digitally within 2ms after the transmitter fires, allowing flexibility of the output telemetry. It has a built-in TOP SIDE LOCATOR (optional), which determines the top of the tool during logging.

The telemetry can handle the Hybrid Memory / Real Time mode at the same time, the UHSRH can run as a Combo with the Multifinger Caliper 40 or 56 arms, The data can be uplink in Real time at a high baud rate (100kbaud to 400kbaud), all the data is digitalized, transmitted and storage in 32 Gbytes of memory continuously over 18 hours. The tool can be run as a standalone memory tool with slickline units.

UHSRH runs with Scientific Data Systems panels and their Warrior software.



For enquires please contact our distributor:

Flowlift Inc.
105-500 29 Street SE
Calgary, AB T2Z 3W9

Specifications:



Model	UHSR 1-11/16"	UHSR 2-3/4"	UHSR 3-1/2"
Pressure rating	17,000 psi (117.2Mpa)	17,000 psi (117.2Mpa)	17,000 psi (117.2Mpa)
Temperature rating	350°F (177°C)	350°F (177°C)	350°F (177°C)
Tool diameter	1-11/16 in (42.8mm)	2-3/4 in (68.8mm)	3-1/2 in (68.8mm)
Tool Length	under 14.7 ft. (4.475m)	under 13 ft. (4m)	under 13 ft. (4m)
Tool Weight	73lbs (33.0kg)	150lbs (68kg)	230lbs (104.3kg)
End threads (Top/Bottom)	1 -3/16 -12 Go Pin/Bo	10 pulses/rev1 -3/16 -12 Go Pin/Bos (directional)	1 -3/16 -12 Go Pin/Box
Tool Mode	Hybrid Real time, and Memory / or Memory	Hybrid Real time, and Memory / or Memory	Hybrid Real time, and Memory / or Memory
Power Tool Bus	100VDC to 130VDC	100VDC to 130VDC	100VDC to 130VDC
ToolBus	OWB 1.5Mbps	OWB 1.5Mbps	OWB 1.5Mbps
Sample Rate	1μs	1μs	1μs
Internal Memory	32 GBytes	32 GBytes	32 GBytes
Current Consumption	90mA @ 130VDC	90mA @ 130VDC	90mA @ 130VDC
Sensor Measure Point	Near @ 3ft, Far@ 5ft, Radial@ 2ft.	Near @ 3ft, Far@ 5ft, Radial@ 2ft.	4Near @ 3ft, Far@ 5ft, Radial@ 2ft.3mm (1-11/16")
Transmitter	1.2 in, Dia. Omni	2 in, Dia. Omni	2-5/8 in, Dia. Omni
Receivers	Near&Far =1.2 2 in. Omni, Radial= 6 Segments	Near&Far = 2 in. Omni, Radial= 8 Segments	Near&Far = 2-5/8 in. Omni, Radial= 12 Segments
Recommend Max. Casing ID	7.0 in. (177.8mm)	10.75 in. (264mm)	13.625 in. (346mm)
Recommend Min. Casing ID	2.0in. (50.8mm)	3.5 in (89mm)	5.25 in (140mm)
Borehole Fluids	Oil-Fres Water -Brine	Oil-Fres Water -Brine	Oil-Fres Water -Brine
Tool Positioning	Must be Centralized	Must be Centralized	Must be Centralized
Logging Speed	30 ft/min (9.1 m/min)	30 ft/min (9.1 m/min)	30 ft/min (9.1 m/min)

For enquires please contact our distributor:

Flowlift Inc.
105-500 29 Street SE
Calgary, AB T2Z 3W9