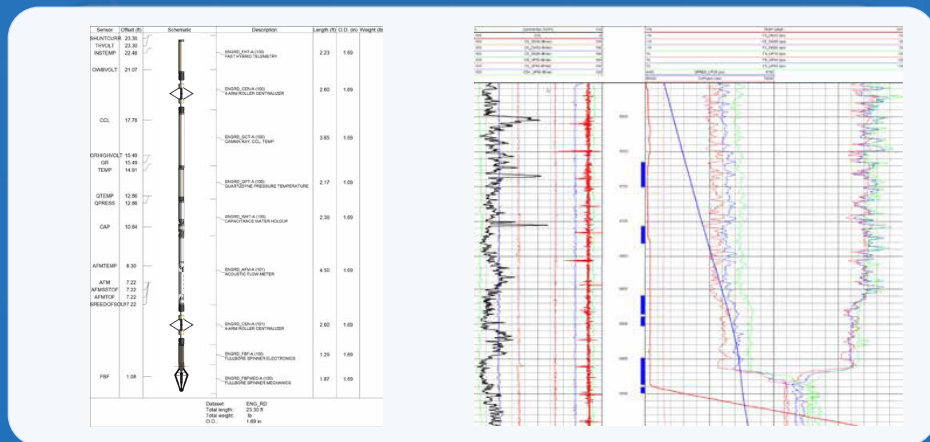


PLT Tool String

Production logging consists of several measurements to evaluate fluid movement in and out of wellbores, and is a technique that traces its origin to the 1930s, with much evolution since then. It is mainly used to determine fluid and flow properties commonly measured with a spinner flowmeter (a blade that rotates when fluid moves past it), which requires a calibration process to compensate for friction in the spinner bearings and effects from fluid viscosity (nonlinear velocity responses). EngRD is adding a new acoustic flowmeter to his regular tool string, allowing real-time measurement of flow rates and fluid density. Our telemetry allows us to send 100 samples per second to the surface, opening a window of opportunity to gather far more data while logging with a reliable, accurate temperature sensor and a fast-response quartz pressure sensor.



You can make qualitative conclusions about fluid entries using our acoustic flowmeter and our temperature sensor, particularly in very low-flow rate zones in which a spinner may not be sensitive enough to those ranges. Of course, our Gamma Ray and Casing Collar Locator provides depth control and correlation with completion components. Another advantage is our dual operation mode: Real-Time / Memory. Our tool string always runs, recording all data to memory in case you need a backup. To use the tools on a Slickline or Coiled Tubing operation, you need to add a Battery Housing, a Battery pack, and our Depth Time System (DTS). The tools are rated to 177 °C and 15,000 psi working pressure and are ready for sour service. For surface data acquisition, you need a Warrior 8 System.

For enquires please contact our distributor:

Flowlift Inc.
105-500 29 Street SE
Calgary, AB T2Z 3W9